



**sinus 25 Room-Converter**  
**to neutralise e-smog**  
**and strengthen resilience**

Neutralise the disruptive influences of electrosmog in your living space.  
Bioresonance for increasing vitality and resilience.

# The new challenge from the digital revolution!

---

## It can cause problems

### How does e-smog arise?

Electrosmog occurs wherever technically-produced electrical, magnetic and electromagnetic fields occur. Digital radio signals not very powerful, but have a particularly strong influence on biological life. Today, we have little chance of evading these radio signals. From cell phones, WLAN, all kinds of transmission systems, as well as from satellites, radio frequencies are constantly reaching our cells and they have a significant impact on them. It is not about the amount of electricity (thermal electrosmog), but about the negative information of these frequencies (non-thermal electrosmog = scalar field noise).

Electromagnetic pollution is an invisible danger that has been tested from many angles and interpreted in different ways. Modern information medicine sees a threat in the non-thermal effect, that is, in negative-frequency influence on body cells via e-smog.

### Problem identified, solutions found

For almost 30 years, the research team at i-like Meta-physik, with its internationally recognised expert advisory board, has been researching the problem of non-thermal electrosmog, as well as many other frequencies in addition to magnetic field deficiency syndrome. The i-like system can neutralise the harmful effects of electrosmog fields arising from electricity. Simply put, frequencies of the electromagnetic wave (the transmission current of the devices) are sent so that positive, biologically relevant frequencies are strengthened in the body (increase in resilience and neutralisation of scalar stray fields). In addition, the 8Hz sine wave transmits the clock frequency of the earth's magnetic field to cells.

### What does that mean to me?

Everything that lives is made up of cells. Every cell has its job. Cells' tasks are managed through epigenetics (which controls the DNA). Every living cell has thousands of receivers (so-called receptors), which (according to Prof. Dr. Bruce Lipton's "Signals") pick up frequencies and make this information available to the cell nucleus. This is done by the effector.

The cell receptors know the frequencies occurring in nature. But the new, digital frequencies are still unknown to them. They need to learn to understand these new frequencies of influence. This process takes many generations. That's evolution.

Until evolution has occurred, the new, non-thermal and, above all, digital frequencies are to be regarded as interference fields (scalar stray fields = e-smog). They negatively affect cell function. Thus, cells mutate into new "beings", in an uncontrolled manner and this can cause massive damage. In their new, mutated frequency, they no longer fit into the biological pattern of the human body.

**That is the difference between evolution and mutation. At the moment mutation is happening in a form that has never been seen before!**

### How does the technology work?

i-like technology is based on providing the “bioheap” with appropriate, natural and vital frequencies so that the body is optimised for resilience, i.e. for its own field strength, and can thus be vital and regenerated.

### “Centering in Chaos”

Quote from Dr.med. Manfred Doepp, energy-medical report sinus i-like

With the sinus i-like technology, the original frequency (8Hz clock frequency) is added to life. This primary frequency comes from the earth and is called the earth’s magnetic field. All of life arose from it over billions of years. Even today it nourishes all life. If the earth’s magnetic field went away, life would cease to exist. However, the earth’s magnetic field is changing; it has been weaker for a few centuries.

In addition, more and more people are in shielded rooms. In houses, commercial buildings, shopping areas, schools, means of transportation such as cars, public transport and so on. In most rooms the natural magnetic field of the earth is excluded by a Faraday cage (by many metals such as iron and by concrete and modern building materials). Life energy is thereby withdrawn, and magnetic field deficiency syndrome (MFDS) develops.

Magnetic Field Deficiency Syndrome (MFDS, Nakagawa) shows scientifically that the decreasing geomagnetic field and modern influences are placing more and more stress on body and mind.

Ask your advisor about the scientific work on the MFDS.

# Regulate electrosmog and refuel the earth's magnetic field

We are “materialized heaps of energy”

## Impact

With the i-like sinus 25 Room-Converter you can neutralise electrosmog to a bioresonance frequency. At the same time, you bring the natural earth's magnetic field, as a nature-identical sine wave, directly into your living and working space. The positive results are not just the neutralisation of harmful electromagnetic pollution, but also the revitalizing for all people, animals, and even plants in area covered by the sinus 25 Room-Converter.

The unique sinus Converter permits different frequencies to be used individually. By installing a specific frequency on the sinus 25 Room-Converter (by using a sinus Converter card), different frequency patterns can be activated. In this way, positive frequencies can be supplied to people, pets, food, etc.

## What is the direct benefit?

If the electrosmog in the area of influence is neutralised with i-like technology and the 8 Hz earth magnetic field is transmitted as a sine wave in a room, many beneficial effects arise.

For example, by counter-regulating stray electromagnetic fields, typical, scientifically proven, negative influences can be mitigated. This can lead to a lot of positive outcomes;

- **Memory performance can be improved**
- **Reaction time (performance, vitality) can be improved**
- **Correct decisions are made more often**
- **Health can be promoted indirectly**
- **Stress can be reduced, creating better performance and better teamwork**
- **Positive frequencies can optimise sleep**



(z.B. Projekt SCigenia Forschung Wien, “Neurological and cellular effects of radio-frequency electromagnetic fields”, ATHEM-2, Prof.Dr.med. W. Mosgoeller, 2016)

### Are there rules?

Since 18 November 2016, employers in the European Union have been required to protect their employees from e-smog. Researchers agree that even fine electromagnetic pollution frequencies, especially in the high frequency range used with WiFi networks, digital telephony, mobiles, satellites, LED lights, etc. are also extremely harmful.

Lawmakers have not yet taken this fact into account enough. But they are currently working intensively on the scientific findings. It is only a matter of time before this loophole is closed.

### Today, the WHO says: “Non-thermal electrosmog has possibly carcinogenic effects” (group 2B).

#### What does this mean?

Business is already alarmed. Major insurance companies and reinsurers are already adding the following to their policies: “any and all direct or indirect damages caused by electromagnetic pollution pose incalculable risks and are thus excluded from coverage”.\*

Mobile phone manufacturers have started to write in their operating instructions: “Devices to be used or carried at least 1 m from your body”. How this should work is not described. But it shows what respect the providers of devices of the new digital world have for court claims. Many judgements have already been issued against manufacturers. Billion-dollar lawsuits are looming.

\*(E.g. 7.2.2015, insurance policy issued by CFC Underwriting Ltd., a part of Lloyds of London)

### Where do I need to convert e-smog?

Any place where people spend more than an hour under the influence of e-smog. Provide your employees, your family, your customers, your patients, and your visitors with a bioresonant atmosphere!

- At home
- Commercial and industrial facilities of all kinds
- Office services (office, banks, accounting etc.)
- Hotels and spas
- Dining, Restaurants
- Fitness Centre
- Medical institutions, practices
- Shops incl. check-outs
- Post offices, stations, and other places with counters
- Car dealerships
- Training centres such as universities, schools, kindergartens, etc.
- Kennels and stables
- Farms (livestock, grain, food)
- ... and much more.

# sinus 25 Room-Converter

Convert e-smog and bring the feel-good frequency of the earth into the room

## This is how the Converter works

Disturbing frequencies have been measured, analysed and neutralized using technology developed in Switzerland, together with world-renowned experts, for many years. The frequency programming takes place on so-called Converters, which contain 24 carat pure gold and optimised minerals. The required carriers (Converters) have not only been developed in Switzerland, but they are also 100% produced there. This guarantees the safety and long-lasting quality of all our Converters.

The sinus Converters of the sinus 25 Room-Converter are charged by bioresonance programming so that potential interference frequencies can be neutralised. With the clocked devices, the sinus 25 Room-Converter and the sinus Body, the frequencies of the earth's natural magnetic field are transmitted. With the sinus 25 Room-Converter the biological resilience for absorption of all frequencies is increased; with the sinus Body even the cell frequency in the body is directly charged.



pulsating  
geomagnetic field



Bioresonance  
activated



Promoting  
resilience



Neutralising  
electrosmog

### Self-regulation and positive influence!

Existing electromagnetic waves and the 8 Hz geomagnetic wave are used to transmit the information from the sinus 25 Room-Converter and to correct potential interference fields. This corresponds to the principle of bioresonance.

All devices in the catchment area of the i-like sinus 25 Room-Converter are converted to bioresonance sources. 24 carat gold and magnetite are used to programme the frequency of the sinus Converters. This also strengthens the “mirror function” of the field self-regulation.



Each sinus 25 Room-Converter has three slots for the sinus Converters. Two sinus Converters can be placed per slot. In total, the sinus 25 Room-Converter has a capacity of six different sinus Converter frequencies. **Important:** The sinus Converter must be plugged into the sinus 25 Room-Converter with the three golden strips facing upwards.

### sinus Converter:

**e-smog:** With the e-smog Converter, it is possible to neutralise negative information from all mobile telecommunications systems (incl. 5G), from LED and infrared radiation, and from devices and cables that produce e-smog.

**sleep well:** The sleep well Converter provides you with information about letting go, recharging, and processing energy. The aim is a regenerative and vital sleep.

**concentration:** The concentration Converter provides the ideal frequencies for concentration and memory performance. Thanks to the activation of frequencies, increases in cognitive performance can be achieved.

**hawaii harmony:** Hawaii is considered the centre of our Earth's primordial energy. With the hawaii harmony Converter, these frequencies are made available to you. Enjoy the Hawaiian feeling at home!

**relax & regeneration:** The relax & regeneration Converter provides you with information about regenerating, letting go, and living in the HERE AND NOW. Ideal for meditation, yoga, reading, and relaxing or simply for your well-being.

**sport & fitness:** Outdoor sports are particularly healthy. With the sport & fitness Converter, you bring natural energy indoors and thus indirectly increase your performance and training success.

**food:** With the food Converter you vitalise food, activate the water molecules in the nutritional substance and balance out negative information. This makes food more vital and bioactive.

**animal:** The animal Converter provides pets with various pieces of information that are specifically tailored to their needs. Animals can thereby gain more vitality and balance.

### i-frequency und p-frequency

Detailed information can be obtained from your personal consultant.

# Use of the sinus 25 Room-Converter

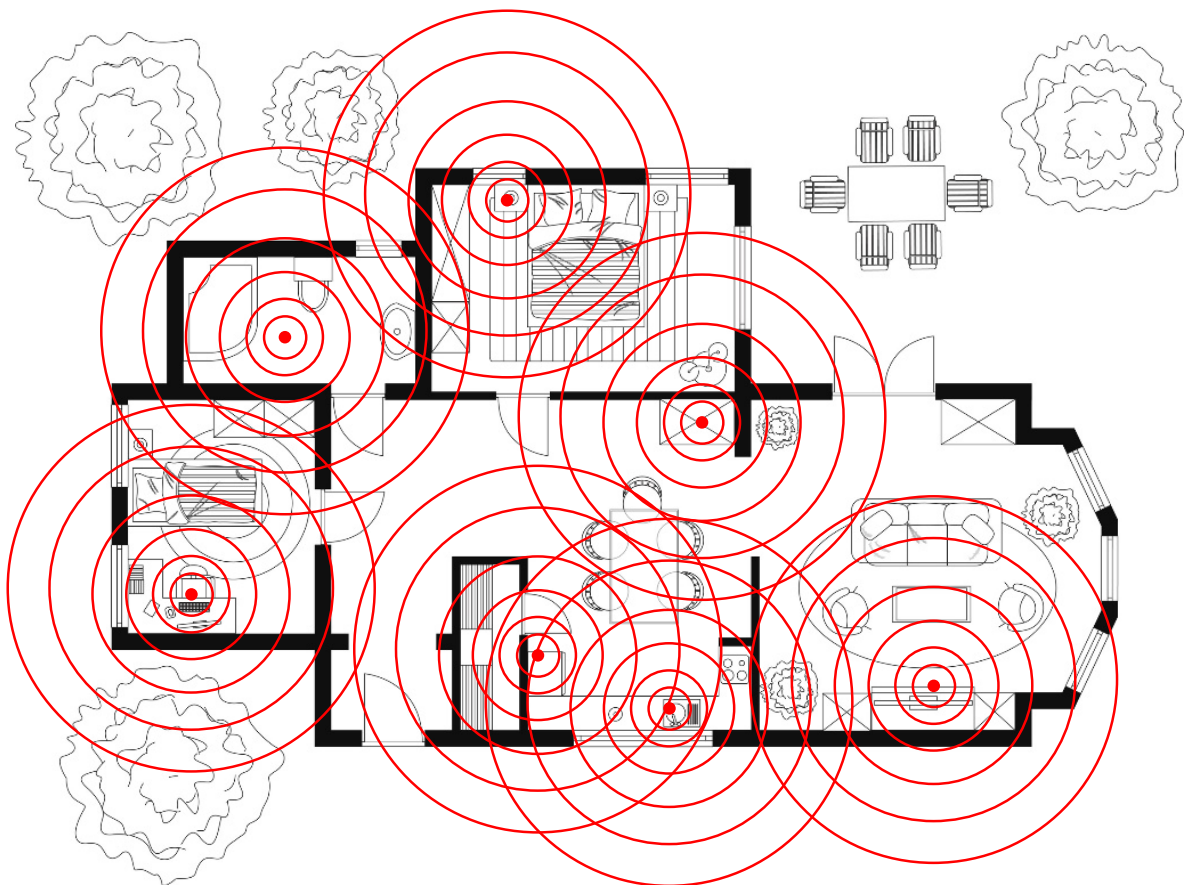
Convert e-smog and bring the feel-good frequency of the earth into the room

## Use and Effect

The sinus 25 Room-Converter has a spherical emission of around 25 metres in diameter. Within this area of influence, the sinus 25 Room-Converter activates all devices, cables, light sources, transmitters, and any external sources of negative electromagnetic pollution into a bioresonance frequency. Disturbing field noise is neutralised. The body is provided with feel-good frequencies. All with the 8 Hz cycle of the earth's magnetic field. A positive atmosphere is created.

## Geomantic interference fields

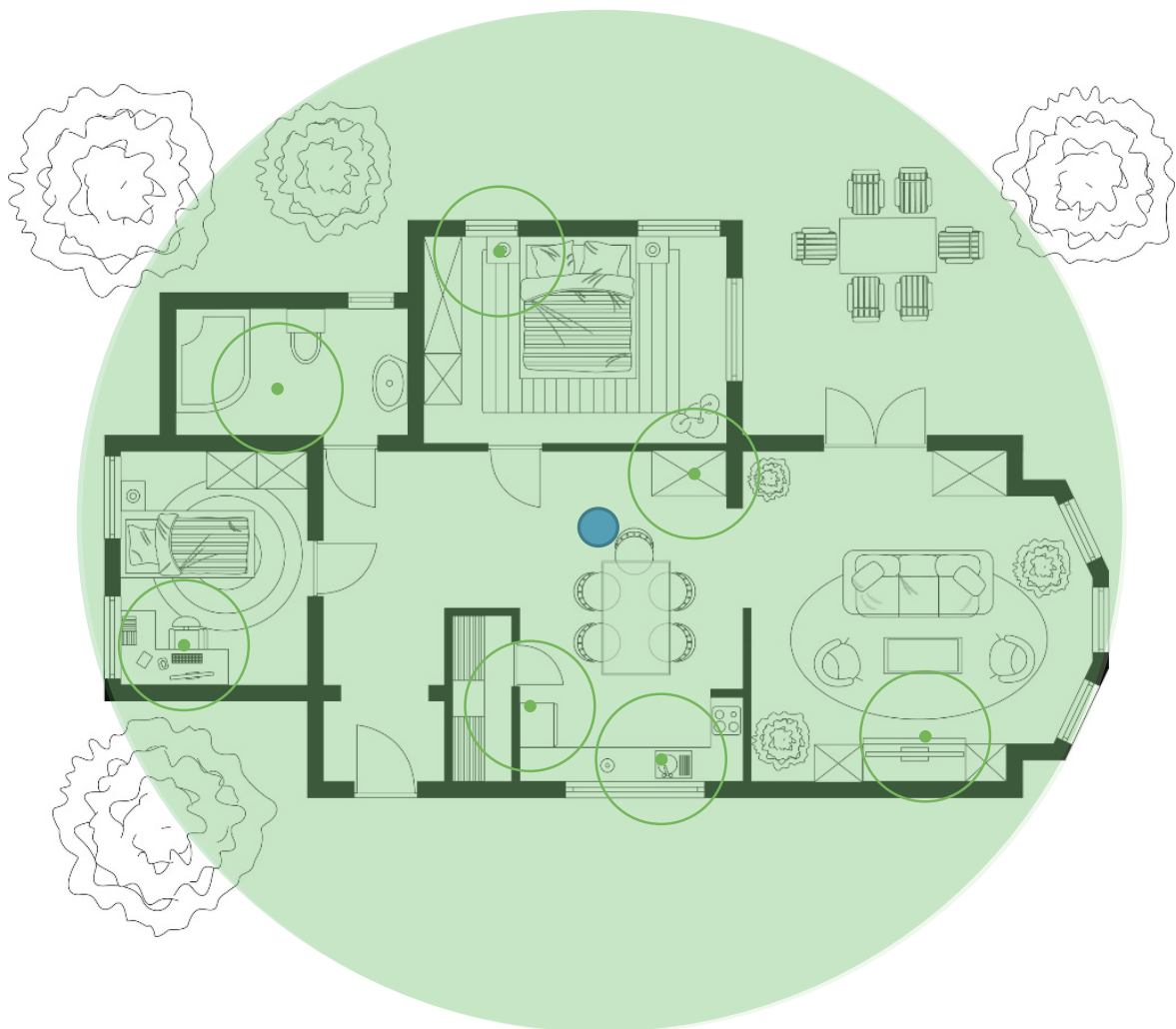
Frequency interference from geomantic areas is corrected just like those from electromagnetic fields. Grid faults, aquifers, and other sources of interference can be corrected by destructive interference. The neutralisation of geomantic interference fields can take a few days or even weeks compared to e-smog (which is corrected immediately).





Devices emitting e-smog

### What do I need?

In addition to the instructions for the sinus 25 Room-Converter, companies may also want to consult with trained consultants. Certified i-like specialists for electrosmog regulation can not only help: they are also authorised to submit the data for certification. As a result, a company can be labelled an “Electrosmog Bioresonance activated company”.



-  sinus 25 Room-Converter and effective radius
-  Vitalised devices

# The right partner at your side

**i-like - the experts in the field of electrosmog regulation and geomagnetic field vitalisation**

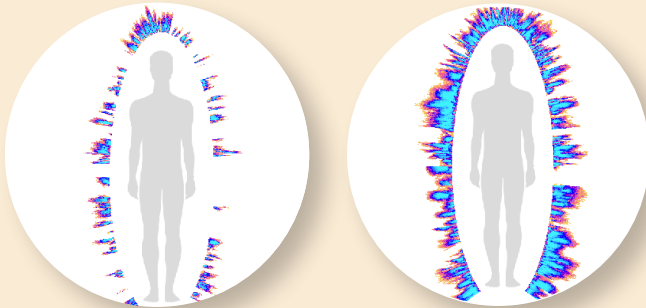
## How it works!

The research department of i-like Metaphysik with its scientific advisory board and extensive network of universities and research centres provides you with a solution that goes far beyond the legal minimum. With the sinus 25 Room-Converter you can neutralise the negative frequencies of e-smog in rooms. In addition, the sinus 25 Room-Converter clocks at 8Hz, the cycle of the earth's natural magnetic field. With it, rooms become a feel-good zone.

## Is there any scientific evidence?

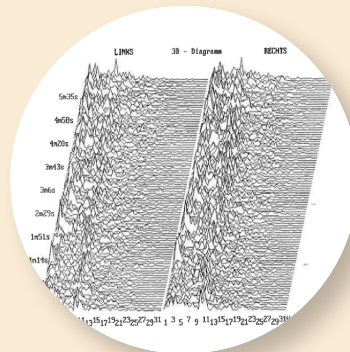
In addition to many thousands of practical experiences, there are double-blind experiments and measurement results from many experts. Certifications such as Dr. Emoto water crystals, information medicine reports from nuclear medicine specialist Dr. med. Manfred Doepp, scientific work by Prof. Dr. Konstantin Korotkov (GDV), from the Haffelder Brain Research Institute, HRV examinations by Dipl.-Ing. MSc Rasmus Gaupp-Berghausen, Aqua-Quinta-Labor and other results clearly show the effectiveness of the i-like technology.

### Prof. Dr. Korotkov, GDV International, Kirlian testing



Quote: "We were able to determine that the i-like e-smog Converters are the only commercially available Converters tested by us which actually correct electrosmog. Conclusion: The measurement data of subjects with an i-like Converter were not any worse than those measured on subjects who had their phone switched off. They even were significantly better!"

### Günter Haffelder Institute for Brain Research, mass spectral electroencephalogram

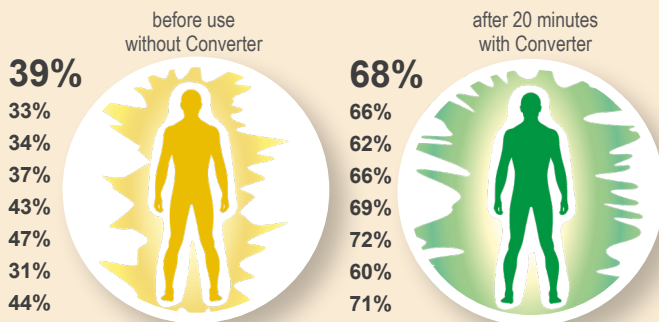


Quote: "With the i-like Converter, the stress of e-smog is gone! The Converters reactivate the test subjects' sensitive perceptions. Pineal blockages are dissolved."

## Note on scientific acceptance

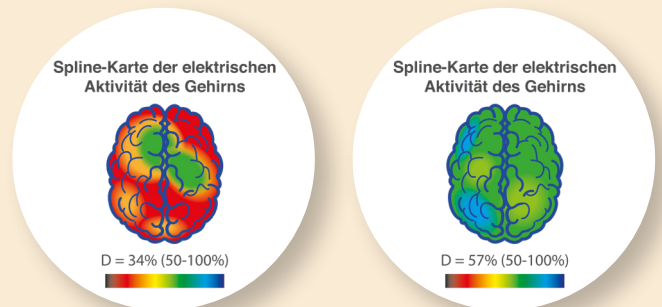
As a manufacturer, we respect our obligation not to make any healing statements about the sinus 25 Room-Converter. The statements and information given on the effects of the device are source-based, scientific studies, and user reports. We dissociate ourselves from any healing claims or promises of a cure, as well as from claims of medical effectiveness in the sense of the Therapeutic Products Act (HWG) and the Unfair Competition Act (UWG).

### Health factor



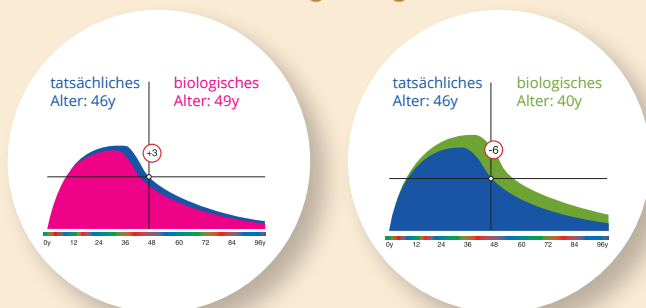
The picture on the left shows the physical condition before use at a health factor of 39 %, the one on the right shows the condition with the Converter at a health factor of 68 %.

### Brain activity



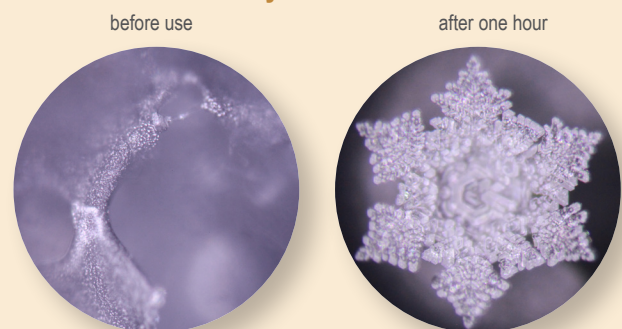
The spline map shows the electrical activity of the brain. Left, without Converter: full of tension; right, with Converter: much more balanced.

### Biological age



The gerontological curve shows - without Converter - a "biological age" of 49 years, after 20 minutes of use with the Converter it is 40 years ("rejuvenation effect").

### Water crystal certification



The Emoto Hado-Life Laboratory carried out an energy measurement with the Converters. Neutral water was vitalized in a glass for one hour.

i-like technology has been tested, certified and examined by, for example

- university studies with double-blind GC SE-Universität H + experiments
- Prof. Dr. Konstantin Korotkov (GDV study)
- Dr.med. Manfred Doepp, nuclear and information physician (Inf.Medicine report)
- Emoto water crystal certification, Hado-Life (Dr. Emoto)
- Brain Research Institute, Günter Haffelder (mass spectral EEG examinations)
- Dipl.-Ing. MSc Rasmus Gaupp-Berghausen (HRV double-blind experiments)
- several hundred thousand users
- several thousand consultants and scientists with feedback

i-like Metaphysik GmbH  
GBR-Zentrum  
CH-9445 Rebstein  
[www.i-like.net](http://www.i-like.net)



Your personal consultant: